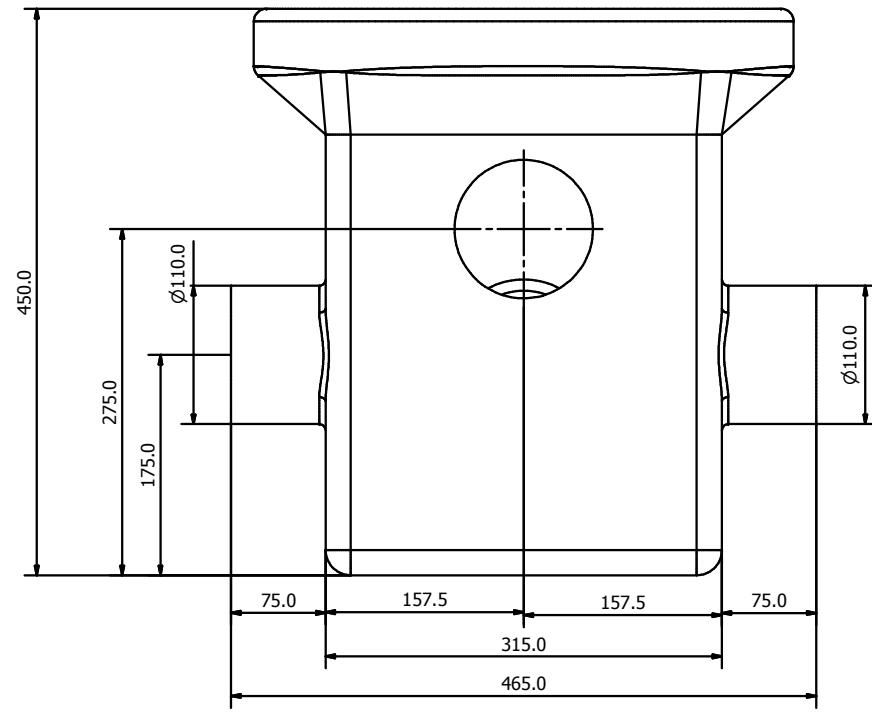
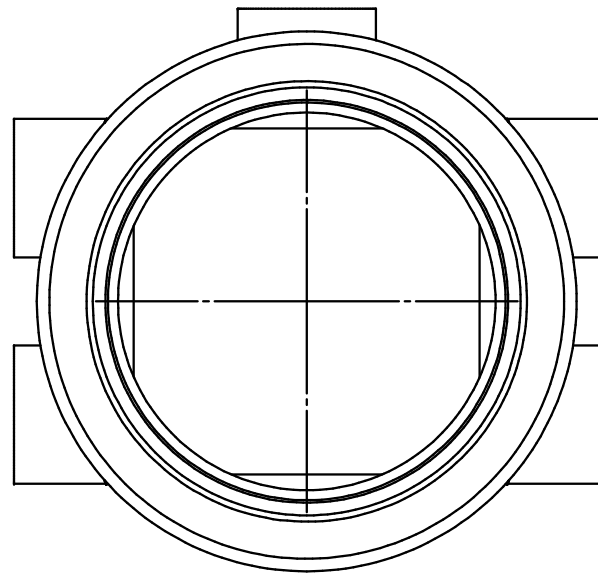


315MM SAMPLING/DISTRIBUTION CHAMBER - CUSTOMER DRAWING 19-06-13

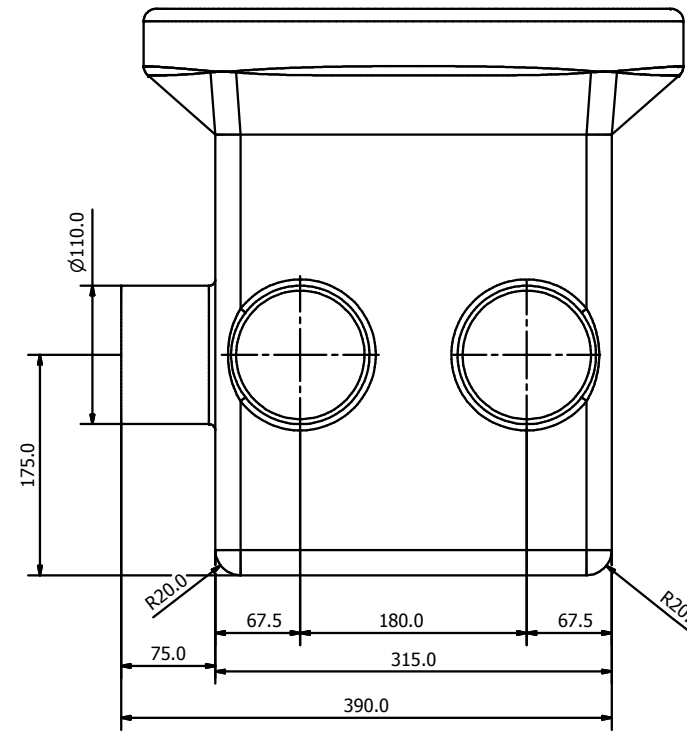
INLET VIEW



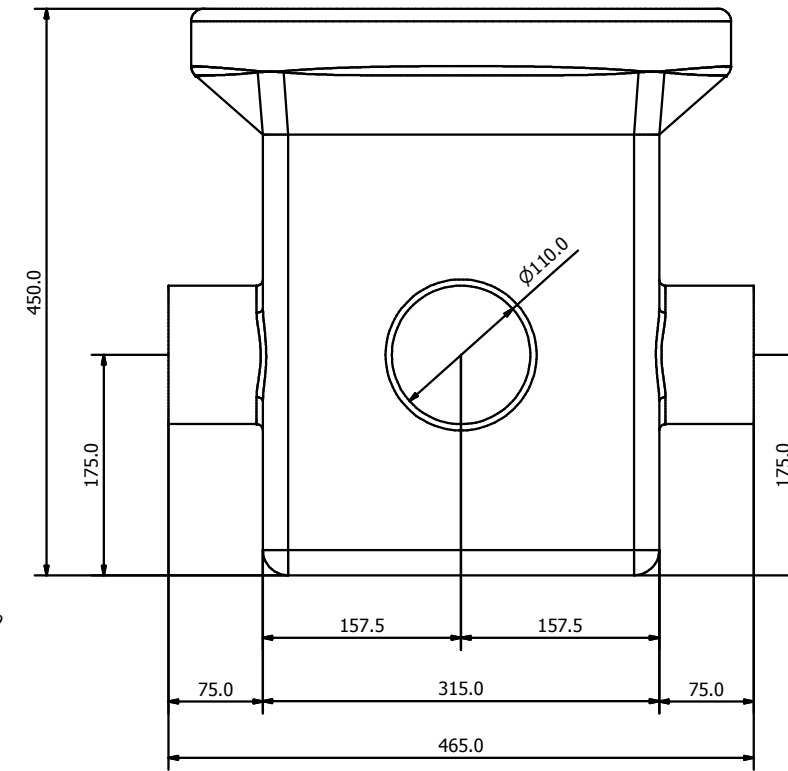
PLAN VIEW



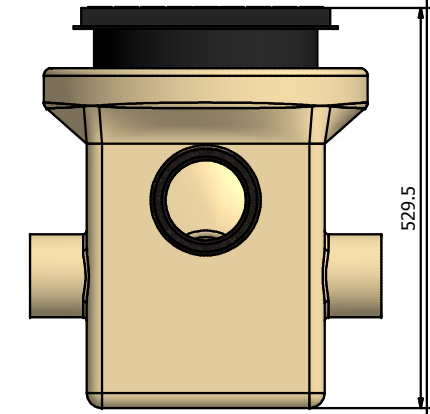
SIDE VIEW



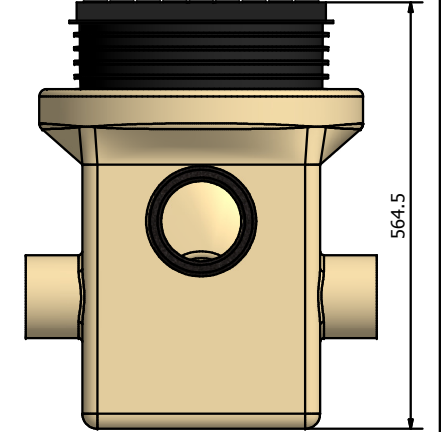
FRONT VIEW



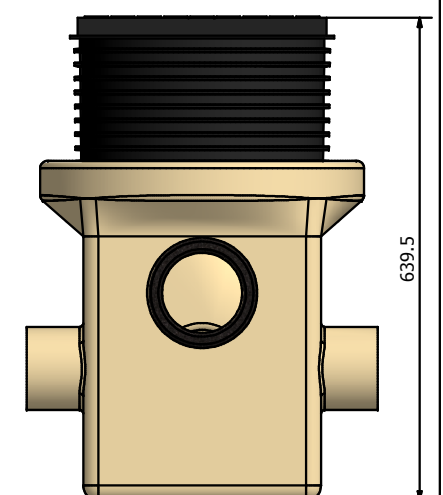
INVERT WITH JUST LID



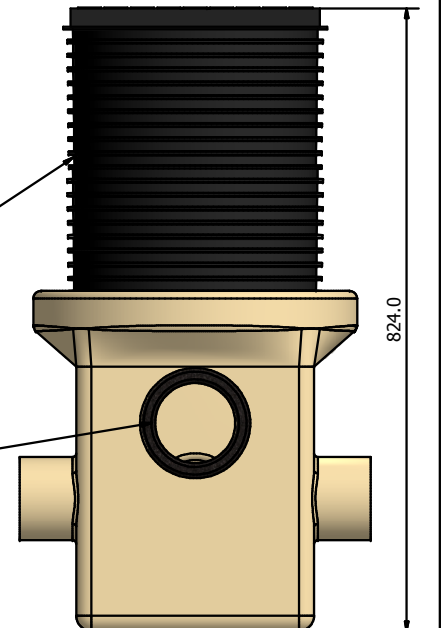
INVERT WITH CUT DOWN RISER



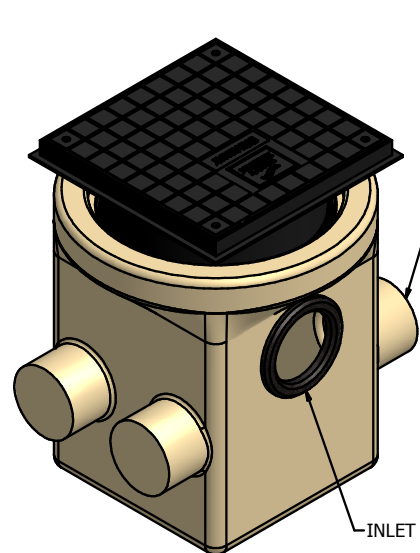
INVERT WITH 1 RISER



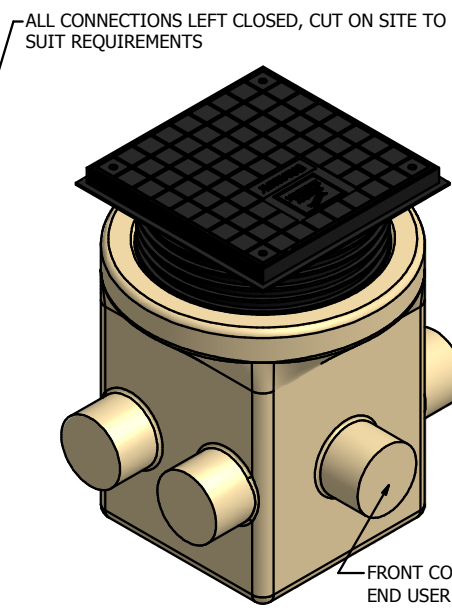
MAX INVERT WITH 2 RISERS



ALL CONNECTIONS LEFT CLOSED, CUT ON SITE TO SUIT REQUIREMENTS

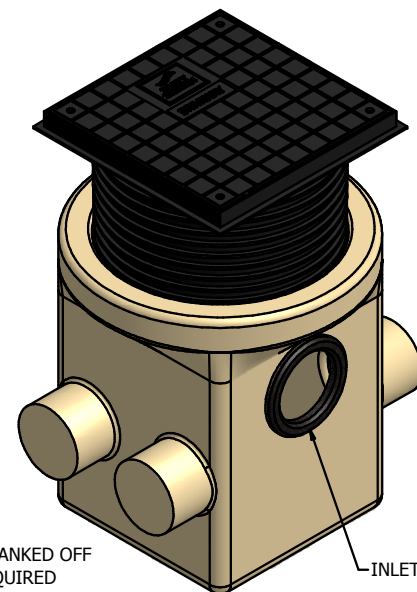


INLET

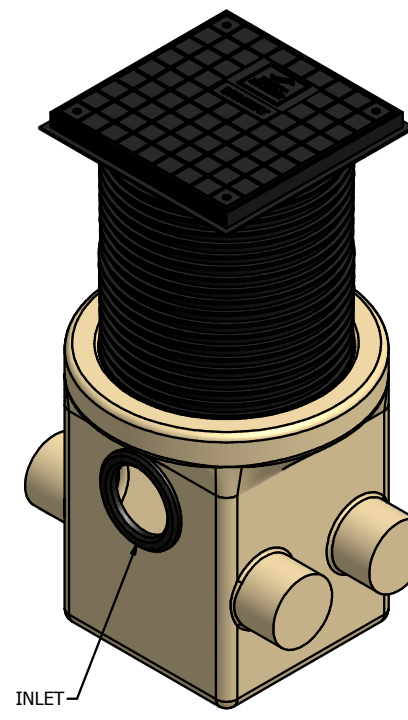


FRONT CONNECTION LEFT BLANKED OFF
END USER TO REMOVE IF REQUIRED

ALL CONNECTIONS LEFT CLOSED, CUT ON SITE TO SUIT REQUIREMENTS



INLET



INLET

ALL CONNECTIONS LEFT CLOSED, CUT ON SITE TO SUIT REQUIREMENTS

RUBBER GROMMET TO ACCEPT 110MM
PIPE, PIPE NEEDS TO POTRUDE INTO
CHAMBER FOR EASE OF SAMPLING. MIN 50MM